

Fig. 1. Hôrka-Ondrej. Plan of the research, indicated profiles in worked areas

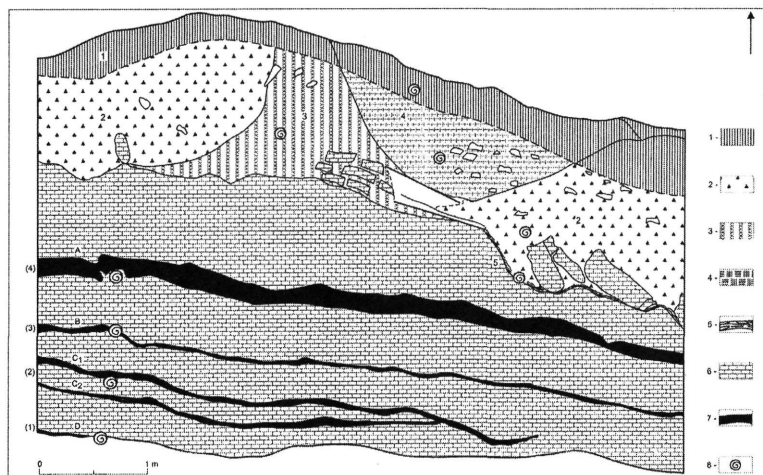


Fig. 2. Hôrka-Ondrej. Area B, a profile from 1992

1 – black-grey rendzina soil 2 – light brown ochre loess, deluvial sediment containing big travertine blocks and small corroded travertine fragments 3 – light brown ochre loam sand deluvial sediment with travertine fragments 4 – a descended Slavic object 5 – irregular brown-green clay loam 6 – layers of pramenite 7 – dark grey to black layers of rendzina soils A–D with finds of chipped stone industry 8 – locations of malacofauna sampling